



# CARGO TERMINAL



**Container  
Terminal  
Mostyska**



Container  
Terminal  
Mostyska

We are creating an infrastructure that  
will allow all European operators of  
multimodal transportation to work on  
equal terms  
with Ukrainian cargo owners

a partnership project of



**LT** LEMTRANS



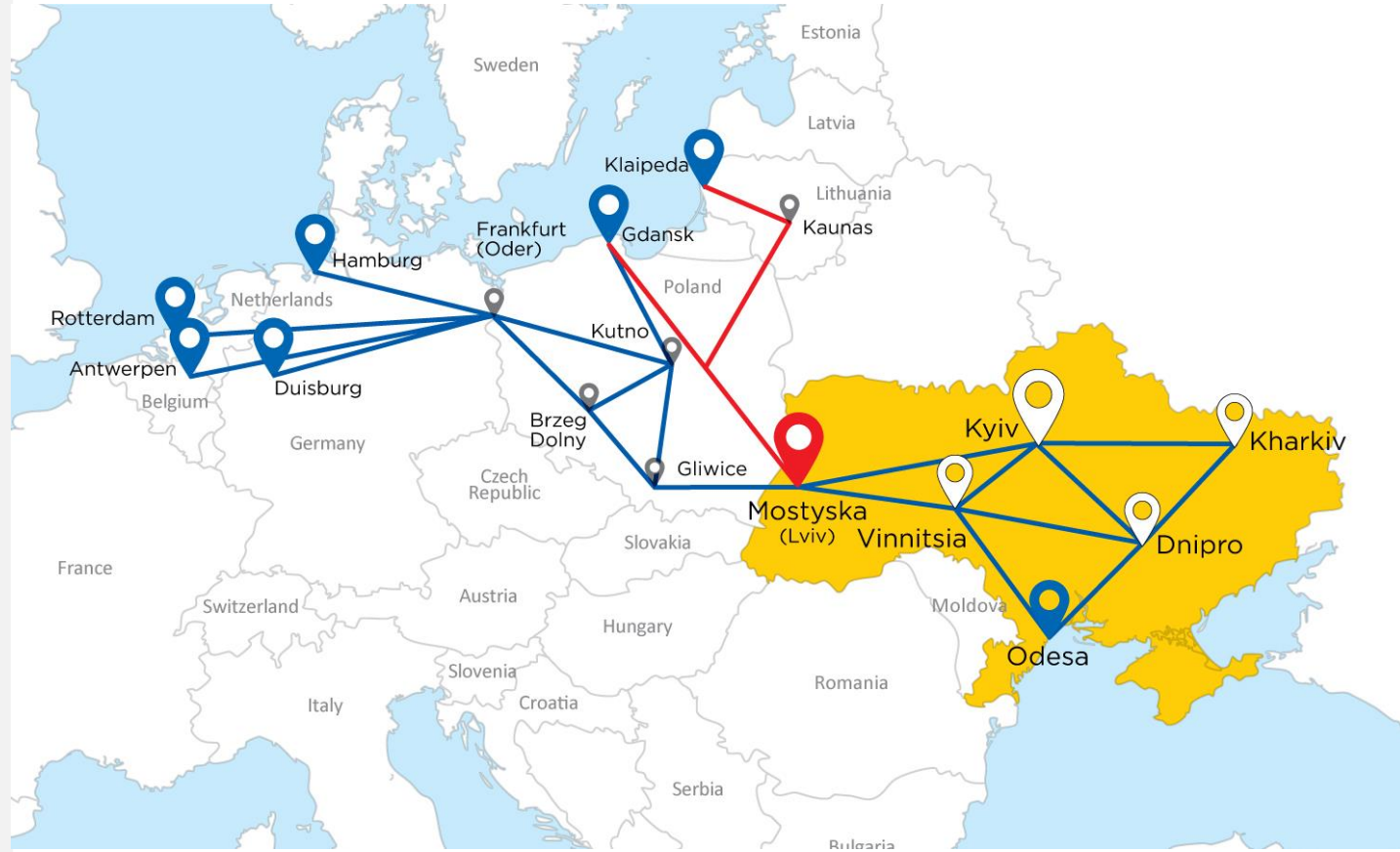
# STRATEGIC CARGO CORRIDORS



"Container Terminal Mostyska " is located a few kilometers from the border of Ukraine and Poland, near the Mostyska-2 railway station (Lviv region), and is connected to the station by railways tracks.



The terminal was created for the purpose of transshipment of containers, general and bulk cargo from platforms/wagons/tanks of railway track 1520 mm to wagons/platforms/tanks of railway track 1435 mm and vice versa, as well as from/to trucks, for import and export.



# KEY TERMINAL PARAMETERS

**36 HA**

Total terminal area

**1435/1520 mm**

Railway om site

**1435/1520 mm**

Shunting locomotives

**4000 TEU**

Container warehouse capacity

Parking place for

**70**

trailers, cross dock on site

**8**

railway tracks

**7,7km**

length total

**4 pairs EU|UA**

Trains daily capacity

Sunflower oil, grains, break bulk and other types of cargoes handling

Dry, imo, tanks, Refer container types allowed

**5 million tones**

Annual turnover



# SERVICES AND FEATURES

---

## Cargo operations:

- Containers transshipment and storage, including dangerous and temperature cargoes
- Grains transshipment directly or with accumulation in elevator
- General cargoes transshipment and storage
- Bulk cargoes transshipment and storage
- Liquid cargoes transshipment: vegetable oils

## Features:

- 24/7 operation
- customs services, customs control open yard
- veterinary and phytosanitary inspection services
- staffing equipment
- refrigerator sockets 120 units
- last mile delivery



# CONTAINER YARD

---

## Cargoes :

- DRY Containers
- REF Containers
- Containers with dangerous goods
- Tank containers
- Contrailer

## Equipment :

- Area 12000 sqm
- Capacity 4000 TEU
- REF sockets 120 units
- Container loaders 3 units.

## Fronts 1, 2 :

- two pairs of railway tracks 1435+1520 mm
- wagon scales on each railway track
- length of each front 442,5m





# GRAINS STUFFING

---

**Grains stuffing into containers:**

**Output:** 15000 mt per month

**Grains stuffing into wagons/  
containers with holds:**

**Output:** 15000 mt per month



# CONTRAILER TRANSSHIPMENT

---

**Contrailer trasshipment:**

**Output:** 3000 contrailers per month



# LIQUIDS YARD

## Cargoes :

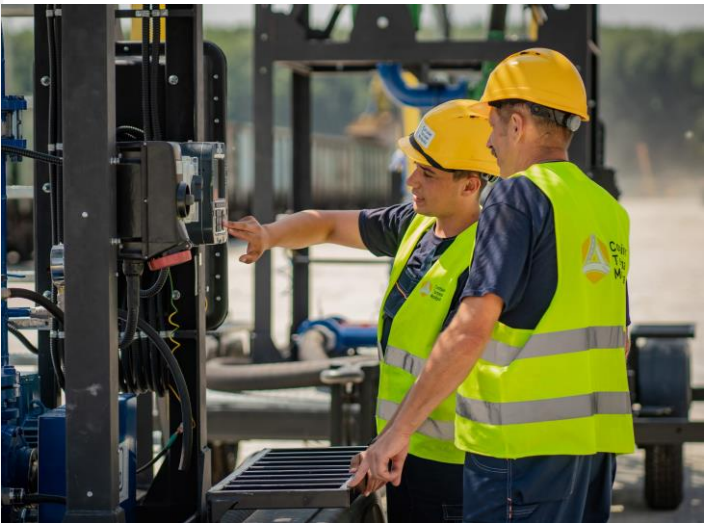
- vegetable oil, transshipment 80 cbm/ hour
- diesel fuel, налив 60 cbm/ hour

## Output:

Cargoes	24-hours	Monthly
Vegetable oil	64 rw tanks, 4500 cbm	2100 rw tanks, 126000 cbm

## Fronts 1,2 :

- two pairs of railway tracks 1435+1520 mm
- wagon scales on each railway track
- length of each front 442,5 m





# GRAIN COMPLEX, ELEVATOR

## Equipment :

- elevator capacity 4515 cbm
- 3 silos of 1000 tons each, 2 bunkers of 300 tons, 1 hopper of 500 tons
- bucket-type norias with output of 200 tons/hour
- chain scraper conveyors with output of 300 tons/hour
- own laboratory
- cleaning, finishing
- two pairs of railway tracks 1435+1520 mm
- length of each front 678,3 m

## Output:

Cargoes	24-hour	Monthly
Grains	6000 tons	180 000 tons

## Technologies:

- wagon - wagon
- wagon - elevator - wagon
- truck - wagon
- truck - elevator - truck



# GENERAL CARGO

---

## Cargoes:

- pallets
- Bigbags
- Coil and sheet steel
- Stuffing and discharging of wagons, containers, trucks

## Equipment :

- Forklifts 3 to 6 tons
- Forklifts 16 to 20 tons
- Material handler Sennebogen 835

## Fronts 1,2:

- two pairs of railway tracks 1435+1520 mm
- wagon scales on each railway track
- length of each front 442,5 m





# CUSTOMS SERVICES

---

## Available regimes and opportunities for customs clearance:

- customs broker services
- zone of temporary customs control
- open-type temporary storage warehouse (STZ)
- storage of containers under customs control
- availability of phytosanitary and veterinary inspection
- registration of cargo in modes:

## Registration of cargo in modes:

- import
- export
- transit





**Oleksandr Tkachuk**

Director of terminal network development

+380675077093

[O.tkachuk@levadacargo.com](mailto:O.tkachuk@levadacargo.com)



**Container  
Terminal  
Mostyska**